

# Capital Improvement Project Update

December 8, 2022

## Academic and Athletic Construction Project Progress

Stadium

Softball Field

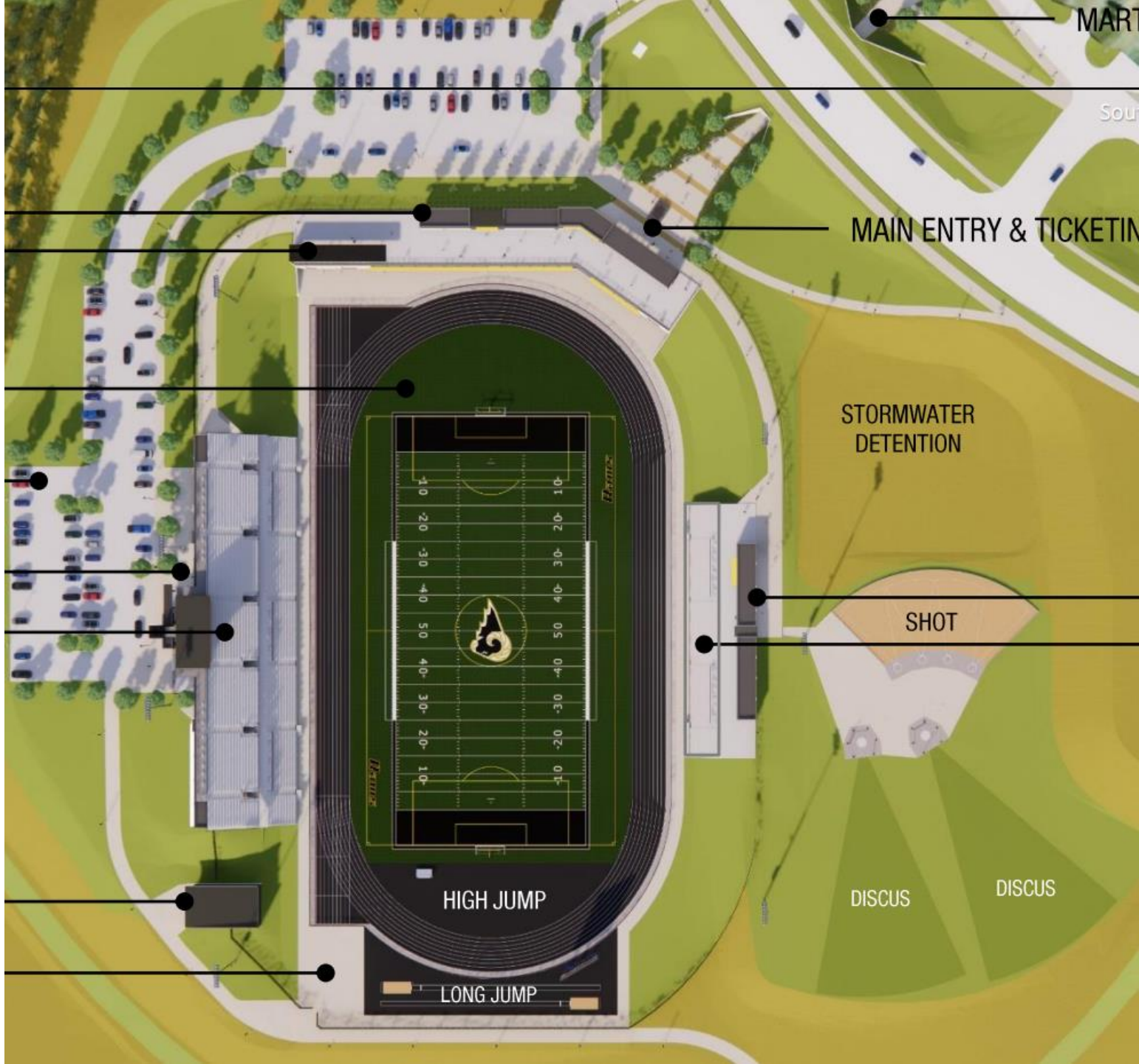
Middle School



# *Stadium Progress Update*

*Frustration has been the norm.*





MART

Sou

MAIN ENTRY & TICKETING

STORMWATER  
DETENTION

SHOT

DISCUS

DISCUS

HIGH JUMP

LONG JUMP



**Windows ready for installation.**



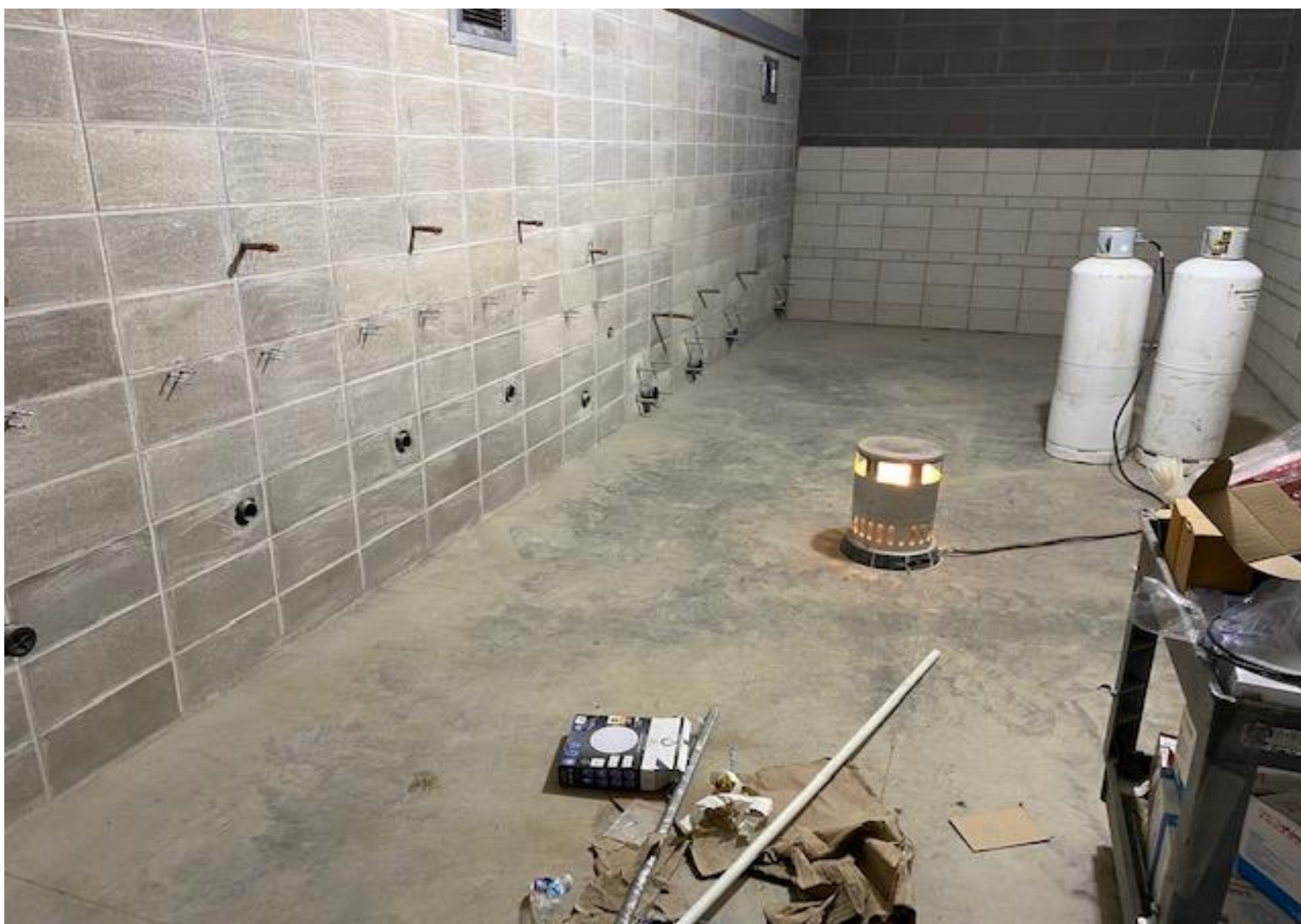
**Locker room current**



**Paving continues west of bleachers.**



**Press box progress.**



**Restroom work has been slow.**





**Siding work underway**



**Bleacher work continues to be slow. But close to completion. 95%.**



**Replacement of unacceptable rock and laser grading of field.**



**Shot and discus.**

# Schedule

- Contractor has not met expectations for December 2022 substantial completion.
  - Contractor will provide temporary heat in buildings to continue interior work.
  - Work and materials stored to date 89%.
- Track surface will be completed in 2023.
- Turf installation in 2023.
- Delays in completion schedule have been very frustrating.
  - District has been very vocal expressing concern.
  - District, architect, engineers, have not contributed to recent delays.
- Delays have been challenging, but end result will be one of the best multipurpose stadiums in Iowa.

# *Softball Progress Update*

---









**Concrete installation at entrance**





**Partial install of softball turf**



**Bullpen**



**Softball dugout progress**

# Schedule for softball

- Contractor unsuccessful in meeting completion date.
  - Project was to be completed December 15, 2022.
  - SEP on many occasions offered additional opportunities for earlier start.
- Turf will be finished when weather allows in spring.
- Sodding and landscaping in spring.



# *Middle School Progress Update*

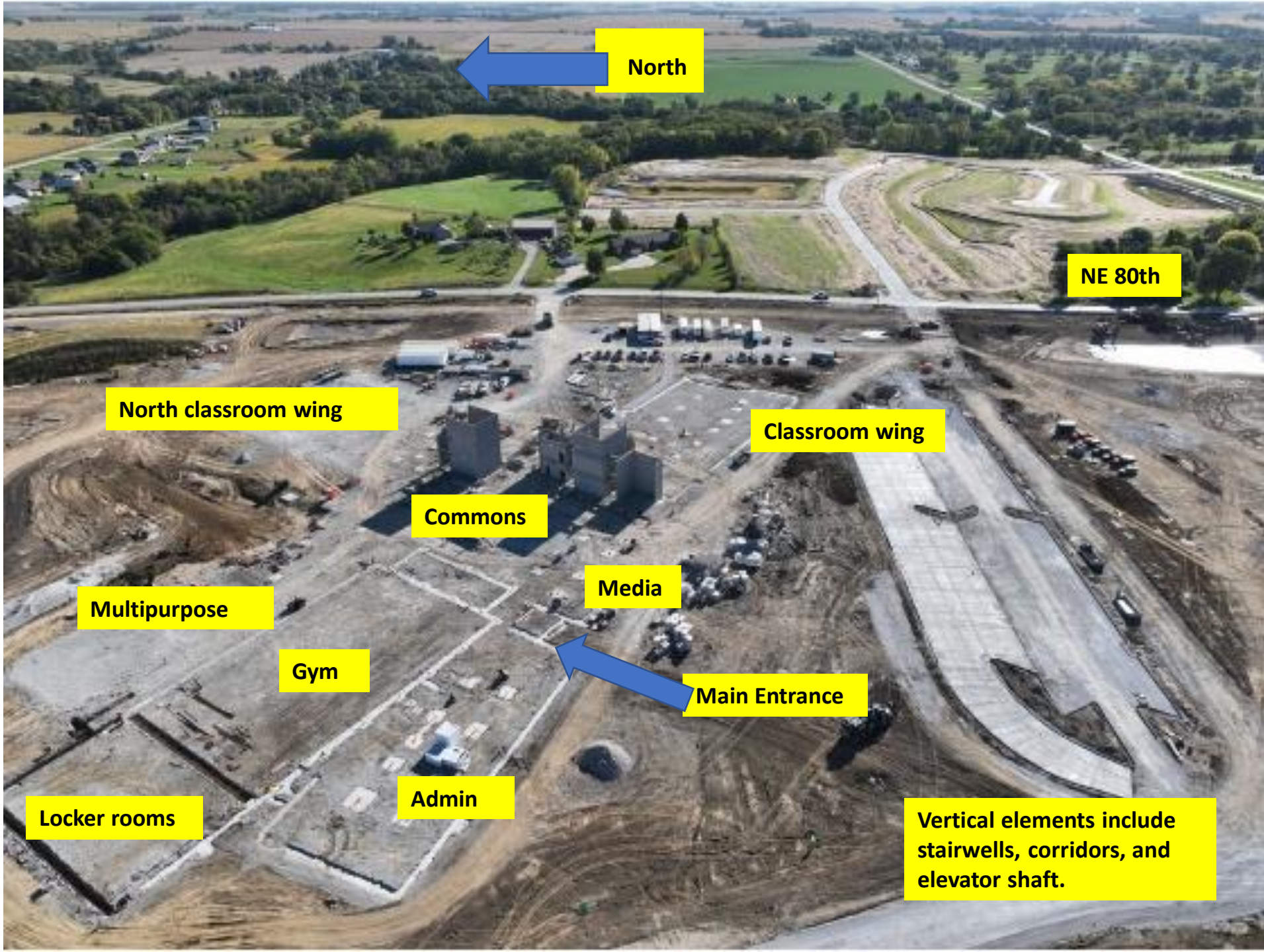




**Overall building rendering.**



**Current vertical structures. Viewing west.**



North

NE 80th

North classroom wing

Classroom wing

Commons

Media

Multipurpose

Gym

Main Entrance

Locker rooms

Admin

Vertical elements include stairwells, corridors, and elevator shaft.



# Progress update

- Materials delivered and work to date is 23%.
- Current work focuses on precast concrete delivery/installation.
- Concentration on supply chain for future. No issues currently.
- No issues currently impacting summer 2024 completion.

